

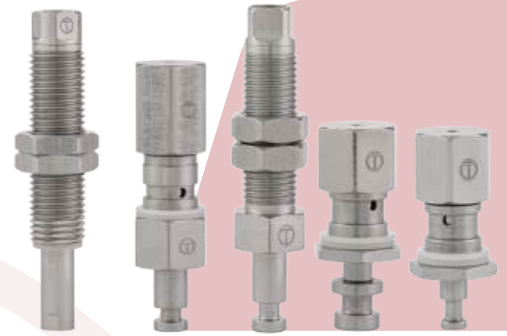
⊕ HOLDER TYPE HJ (Connect with Jig)

THANG LONG TECH[®]

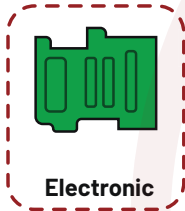
FASTER AND BETTER

FEATURE OF PRODUCT (TÍNH NĂNG SẢN PHẨM)

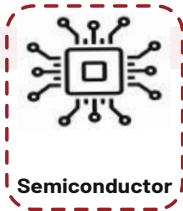
- ✓ Smooth movement, compact design.
- ✓ High durability, low friction and noise.
- ✓ Made by SUS material, no copper.
- ✓ Available for customization.
- ✓ Thiết kế nhỏ gọn, chuyển động mượt.
- ✓ Độ bền cao, ít ma sát và tiếng ồn.
- ✓ Được làm hoàn toàn từ thép không gỉ.
- ✓ Làm theo nhu cầu của khách hàng.



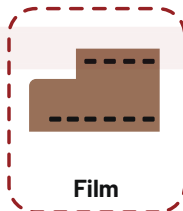
APPLICATION (ỨNG DỤNG)



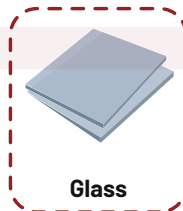
Electronic



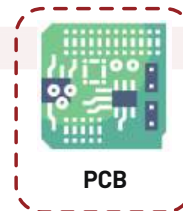
Semiconductor



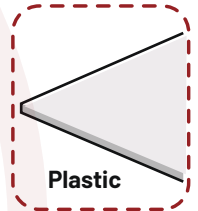
Film



Glass



PCB



Plastic

HOW TO ORDER (CÁCH ĐẶT MÃ)

Principle :

SULFFIX - TYPE/SIZE - STROKE/ROTATE OR NON/ ADAPTOR TYPE AND THREAD - CAP/NON- DN

(1)

(2)

(3)

(4)

(5)

Example

3 - HJ8 - 6RX6 - C - 1

(1) Sulfix

(2) Type:

H : Connect with base

HJ : Connect with jig

(3) Stroke/ Rotate or non rotate/ adaptor type and thread

Stroke : 3, 6, 10, 15, 20...

Rotation: R = Rotate / None = Non-Rotate

Adaptor style:

X : Cylinder type

V : Anchor type

Y : Cone type

T : Barb-Cylinder type

Z : Screw type

P : Pillar (Insert) type

Adaptor thread:

M : Male thread

F : Female thread

⊕ HOLDER TYPE HJ (Connect with Jig)

THANG LONG TECH

FASTER AND BETTER

Adaptor size:

3 = M3	01 = 1/8
4 = M4	02 = 1/4
5 = M5	03 = 3/8
6 = M6	04 = 1/2
8 = M8	

(4) Cap

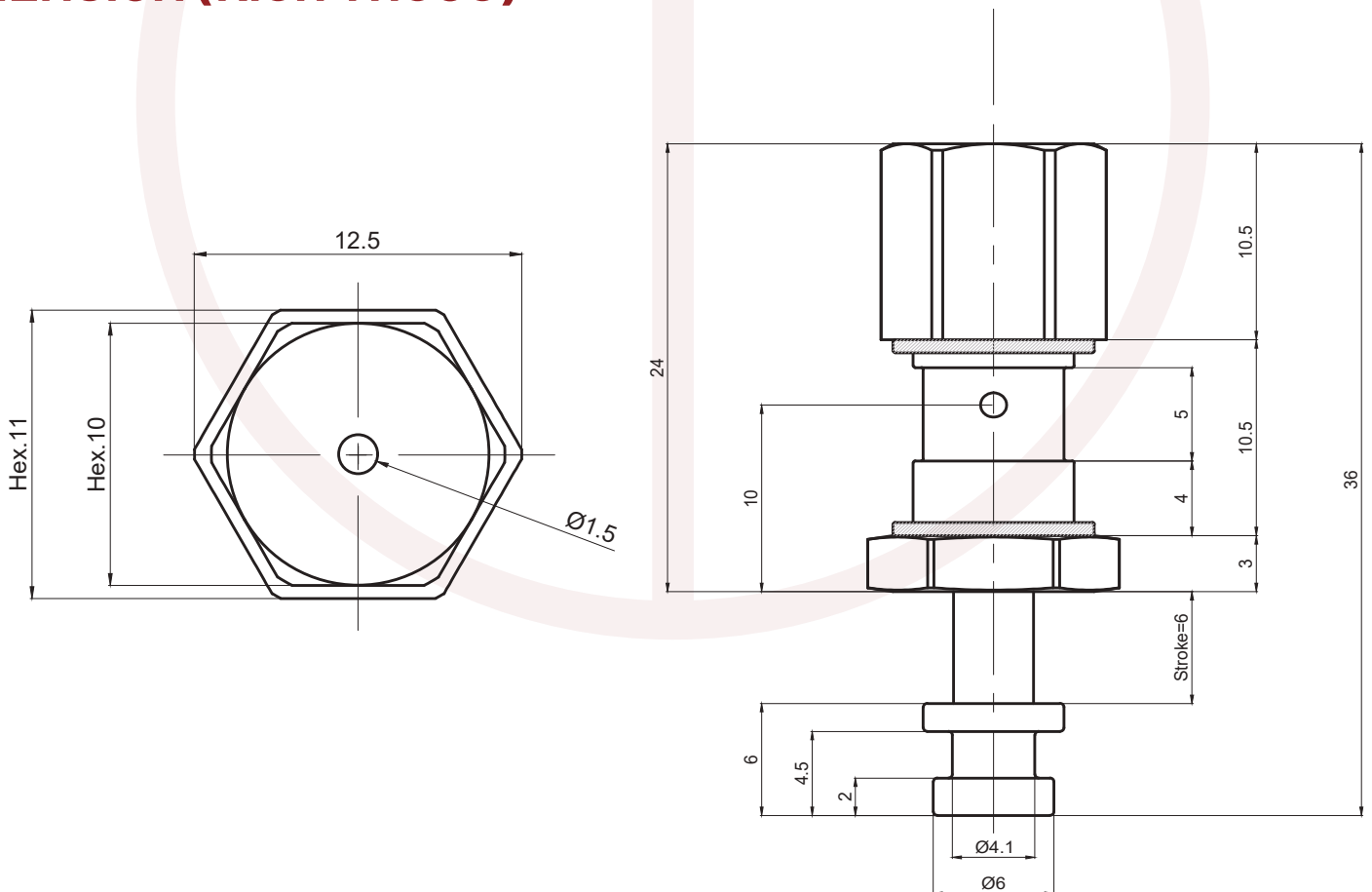
C = Cap

Non = Non- cap

(5) Design Number

- Special dimension can be produced by customer specification.
- Kích thước đặc biệt có thể được sản xuất theo yêu cầu riêng của khách

DIMENSION (KÍCH THƯỚC)



THANG LONG TECH CO., LTD

Office: 25-26-27 TT3, Kim Quan Thuong Street, Viet Hung ward, Long Bien District, Ha Noi, Viet Nam

Tel: +84-24-3-6230117/0118/0119

Email: tlt@thanglongtech.com.vn

Website: www.thanglongtech.com.vn